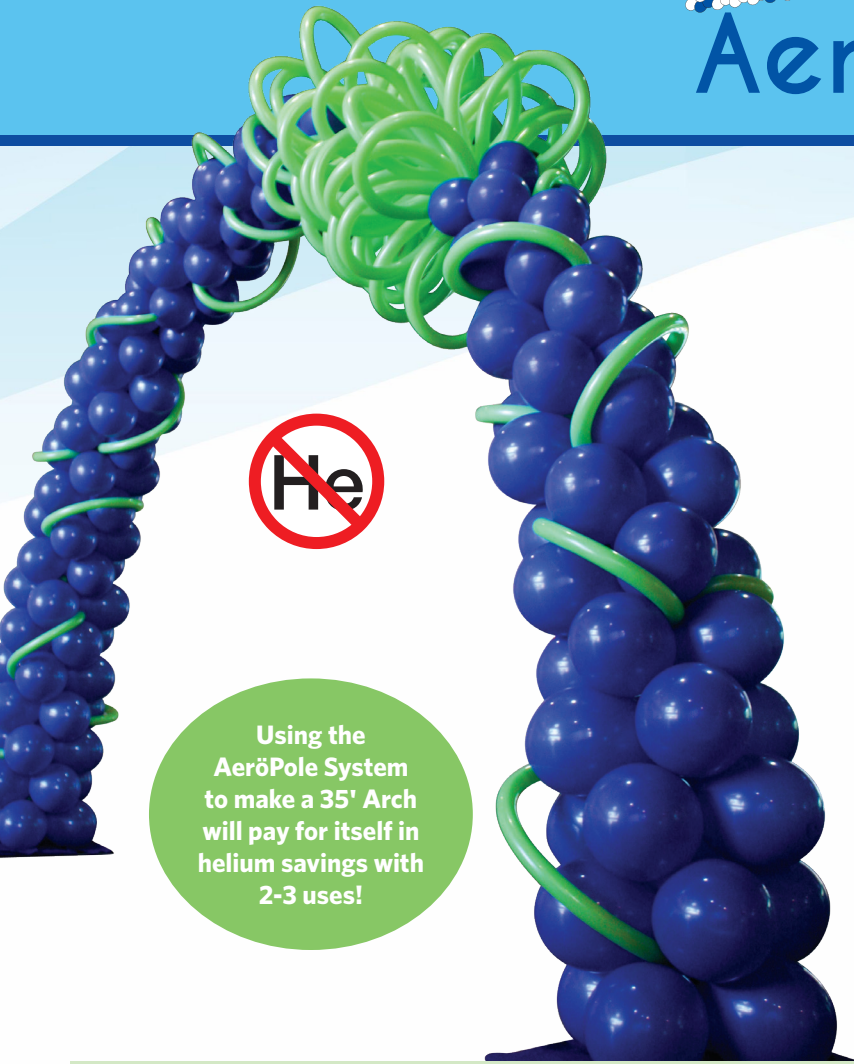


AeröPole System™

Pat. Pending



Using the AeröPole System to make a 35' Arch will pay for itself in helium savings with 2-3 uses!

Presented by



The Air-Filled Solution for Balloon Decor

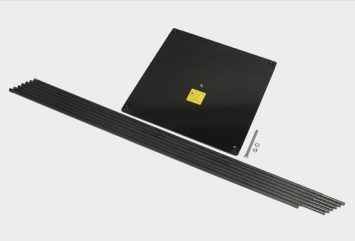
The AeröPole System™ makes it faster and easier than ever to achieve professional results and “wow” your customers with Classic, Air-Filled Balloon Decor.

What It Features:

- Flexible poles made of lightweight, composite material
- Stackable 24" base plates
- Versatility for indoor and outdoor events—even in windy conditions

Why You'll Love It:

- No extra helium costs
- Reusable, which offers a quick return on investment
- Easy to transport, set up, and store



A complete AeröPole arch system requires:

- 2 x #12284 Base Plates
 - 1 x #12282 AeröPole System pole set
- Order necessary components separately as below to make your desired configuration

SYSTEM COMPONENTS



AeröPole System – Base Plate BCP #12284

Contains 1 plate and 1 attachment pin per case (must be ordered in increments of 2 to create an arch)

2 ft. square plate; 28.5 lbs. per plate



AeröPole System – Pole Set BCP #12282

7 x five-foot-long AeröPoles total (one starter pole and six splice poles)

AeröPole System – Additional Pin BCP #16211

4" attachment pin — ordered in singles

AeröPole System – Additional Splice Poles Set BCP #12286

Each box contains 7 splice joint poles

AeröPole System – Additional Starter Poles Set BCP #12473

Each box contains 7 starter poles

For tips on how to construct an AeröPole, see the Qualatex® Everyday Catalogue



Colin Stewart, cba of Stewart's Baskets & Balloons in Barrie, ON, Canada



Colin Stewart, cba of Stewart's Baskets & Balloons in Barrie, ON, Canada

90 day Manufacturer's Conditional Warranty applies – see www.aeropolesystem.com for full terms and conditions.

Available Now:

Circle Arch Adapter Kit

This all new kit creates rounded arches with the existing Aeröpole System!

- Create different sizes of rounded arches using your existing Aeröpole system, the adapter kit, and the number of suggested poles for each size variation.
- Each adapter kit contains instructions and parts to complete one curved arch. Attach the Circle Arch adapter to your Aeröpole System black base plate using the supplied nuts and bolts.
- Please note that if you have silver or grey base plates, use the enclosed small nut with the bolt from your original base pin instead.



AeröPole System – Circle Arch Adapter Kit BDX #17581

Contains 2 Angle Pin adapters, 2 Nuts & Bolts, 2 Lock Washers and 2 additional nuts for customers using the grey/silver bases.

For tips on how to construct an AeröPole, see the *Qualatex® Everyday Catalogue*

